

DM2 Software/ConocoPhillips Automation Interface



DESIGNED FOR:

Sage
MAS 90
MAS 200

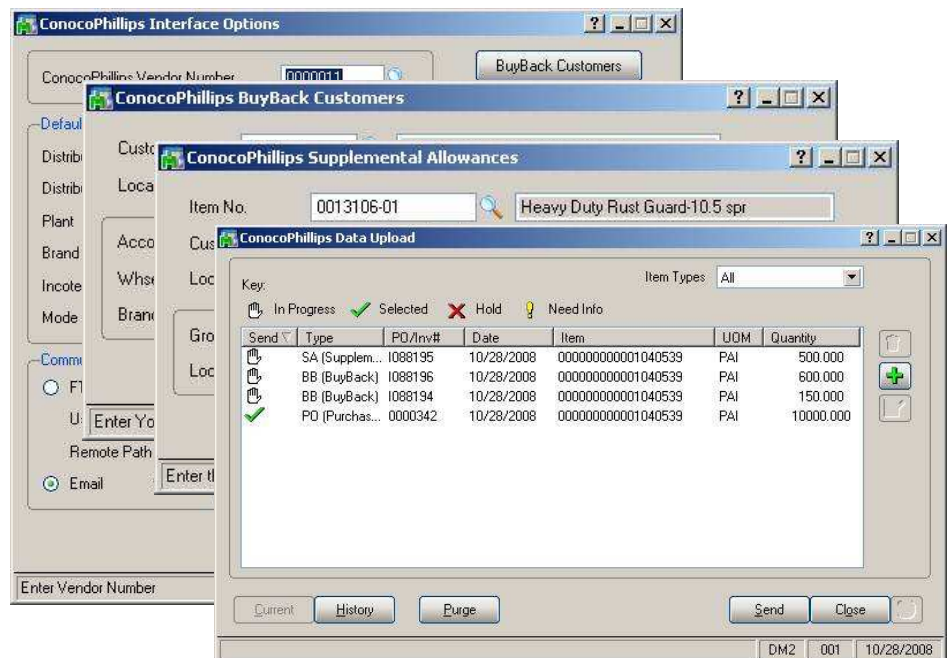


DM2's ConocoPhillips
Interface automates:

- Buybacks
- Purchase Orders
- Supplemental Allowances

DM2 Software - since 1989 DM2 has been developing and supporting back office/ERP systems specifically designed to provide petroleum marketers with the tools they need to automate their operations and maximize profit margins. In partnership with **ConocoPhillips**, DM2 has taken supply chain management automation to the next level. By adding the ConocoPhillips interface to your DM2 *Petroleum Insights* back office/ERP system, you can reduce labor costs while improving accuracy by automating the routine processes involved in handling Buybacks, Purchase Orders and Supplemental Allowances.

DM2 Software's ConocoPhillips interface automatically places Purchase Orders, makes Buyback and Supplemental Allowance requests. It automatically identifies, queues and sends ConocoPhillips transactions to ConocoPhillips' FTP site in real-time while processing Sales Orders and Purchase Orders in MAS90 or MAS200. You can also easily add any additional information that may be required as you go. All you need to get started is DM2's ConocoPhillips interface and an Internet connection.



DM2 Software/ConocoPhillips Supply Chain Automation Interface

FEATURES

Buybacks

Buybacks - ConocoPhillips assigns two account numbers, a SoldTo Account Number and a ShipTo Account Number, to each of their national accounts. When you create a Sales Order to fulfill a national account, the Buyback Customers set-up screen allows you to link the DM2 *Petroleum Insights* A/R Customer Number and Location Code with the corresponding ConocoPhillips Account Numbers. When entered correctly, Sales Order Invoices for that Buyback Customer/Location combination will be automatically be entered into the ConocoPhillips outgoing queue.

Purchase Orders

Purchase Orders – when a purchase order is entered or modified, if the Vendor Number on the Purchase Order matches the ConocoPhillips Vendor Number set-up in that Purchase order will be automatically added to the ConocoPhillips Data Upload Queue. A Purchase Order can also be added to the queue directly from the ConocoPhillips Data Upload program.

Supplemental Allowances

Supplemental Allowances - the Supplemental Allowances set-up screen allows you to link the DM2 *Petroleum Insights* I/M Inventory Item, A/R Customer Number and Location Code with the corresponding ConocoPhillips Supplemental Allowance Group Code and Location Code. When the information has been entered currently, Sales Order Invoice lines that match a Supplemental Allowance Item/Customer/location combination will be automatically treated as Supplemental Allowances and entered in the ConocoPhillips outgoing queue. Supplemental Allowances can either be an amount or percentage. The reporting can be based on Item Pricing with all price levels or assign a specific price level Customer Price Schedule can be Supplemental Allowance only with no special pricing or it can be for all or a specific ship to. Data comes directly from Sales Order Invoices that have been updated.

ABOUT DM2

Since 1989, DM2 has been developing software and working to help diversified petroleum marketers to increase market share and improve profitability through automation. A Sage Master Developer and Reseller since 1991, DM2 uses MAS90 and MAS200, enterprise resource planning systems designed for general wholesale distribution applications, to develop, sell and support *Petroleum Insights* a fully integrated system designed specifically for petroleum marketing applications. DM2 is proud to be a Sage Software Vertical Marketing Partner and member of the Sage Software President's Circle of resellers. DM2 has been a President's Circle award winner since the award's inception and ranked in the Top 10 for MAS 90/200 revenues for last 10 years running.



System Requirements: the ConocoPhillips Interface is designed to work with V4.05 or later. The interface sends information to ConocoPhillips through FTP. The only requirement is that the DM2 system be able to access the Internet and initiate an FTP session to the ConocoPhillips FTP servers. In a MAS90 environment, the workstation where the send is initiated needs to have this access; in a MAS 200 environment, the MAS 200 Server computer initiates the send, and needs to have FTP access to the Internet.

AVAILABILITY:

MAS 90 or MAS 200
Version 4.05 or later

**For additional product information, or to arrange for an in-depth demonstration
or place an order please contact DM2 Sales at 800.866.5151.**

DM2 Software, Inc., is the designer and publisher of the module described herein. Sage Software, the Sage Software logos, and the Sage Software product and service names mentioned herein are registered trademarks or trademarks of Sage Software, Inc., or its affiliated entities. Other names may be the property of their respective owners.



DM2 Software, Inc.
7700 NE Greenwood Dr., Suite 200
Vancouver, WA 98662
Phone: 800-866-5151
Fax: 360-574-9620
www.dm2.com